

# Hampstead Living



## THE LAUREL

FROM THE HIGH \$400s

4 Bedroom, 3.5 Bath

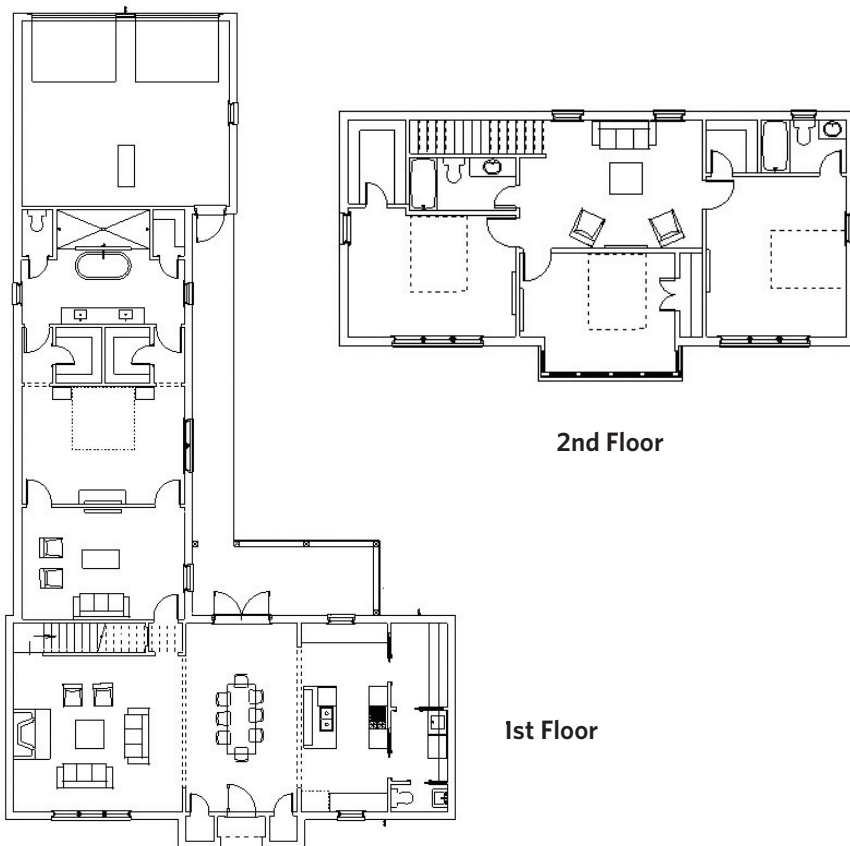
3,039 sq. ft conditioned approx

3,882 sq. ft under roof

The Laurel brings to life a home that is generous and comfortable, yet sophisticated and elegant. One of the largest homes at Hampstead, this plan offers a fantastic layout that is open and inviting - with all the space to grow you could need. Set on a wide lot with a large private backyard, this home features a ground floor Master Suite like no other. Needless to say, the Master Bathroom speaks for itself. Upstairs are three bedrooms and a nice sitting room for guests or children.

### Features Include:

- Premiere Lot Location
- Premium Insulation Package
- Granite Countertops
- Custom Cabinetry
- Pella WeatherShield LoE Windows
- Brick Exterior
- Attached Garage
- Wood Flooring
- Spacious Private Courtyard
- Ground Floor Master
- Post-Tension Foundation
- No-Rot Materials
- Premium Light Fixtures
- Energy Star Appliances
- And More



For more information, visit the Hampstead Information Center. Open Daily, 334.270.6730 | [hampsteadliving.com](http://hampsteadliving.com) | [@hampsteadliving](https://www.instagram.com/hampsteadliving)

