

# Hampstead Living



## THE FREY

FROM THE MID \$400s

4 Bedroom, 2.5 Bath

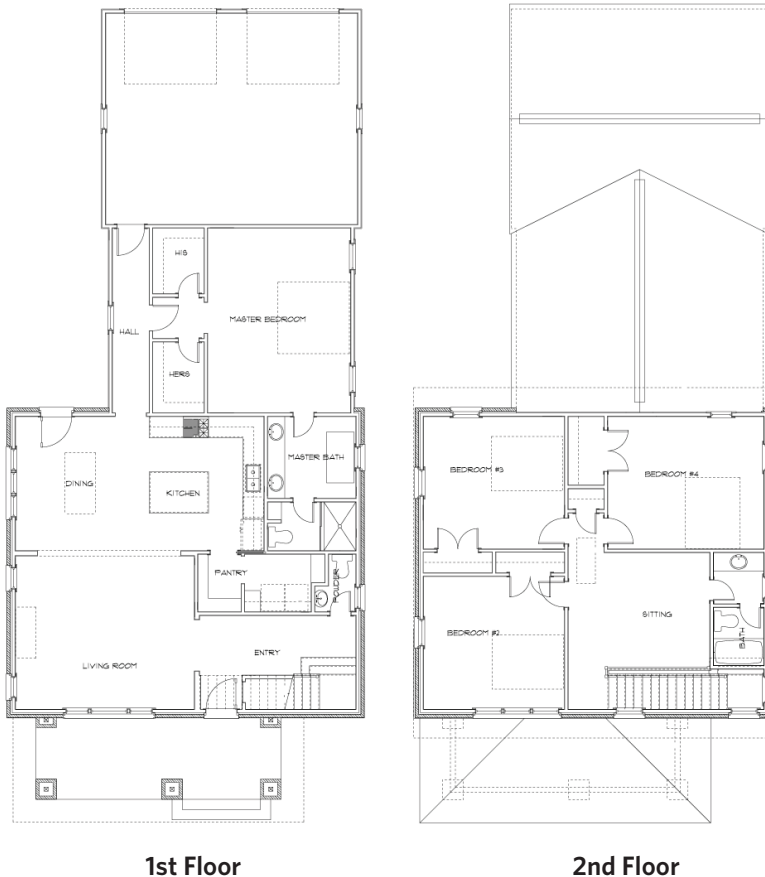
2,381 sq. ft conditioned approx

2,781 sq. ft total approx

The 4 Bedroom, 2.5 Bath Frey plan offers every comfort and feature a new homeowner wants. With a generous size over 2,300 sf, a ground floor master suite, spacious Living and Kitchen areas, beautiful Front Porch and 3 additional bedrooms, the Frey ticks all of the boxes. Hurry - limited lots remain for this home plan!

### Features Include:

- Premium Insulation Package
- Post-Tension Foundation
- No-Rot Materials
- Brick Exterior
- WeatherShield LoE Windows
- Hardwood Floors Finished On-Site
- Granite Counters
- Energy Star Appliances
- Premium Light Fixtures
- Ground Floor Master
- Attached Garage
- Spacious Courtyard
- Spacious Front Porch
- And More



For more information, visit the Hampstead Information Center. Open Daily, 334.270.6730 | [hampsteadliving.com](http://hampsteadliving.com) | [@hampsteadliving](https://www.instagram.com/hampsteadliving)

