

Hampstead Living



THE BROMLEY

FROM THE \$400s

4 Bedroom, 2.5 Bath

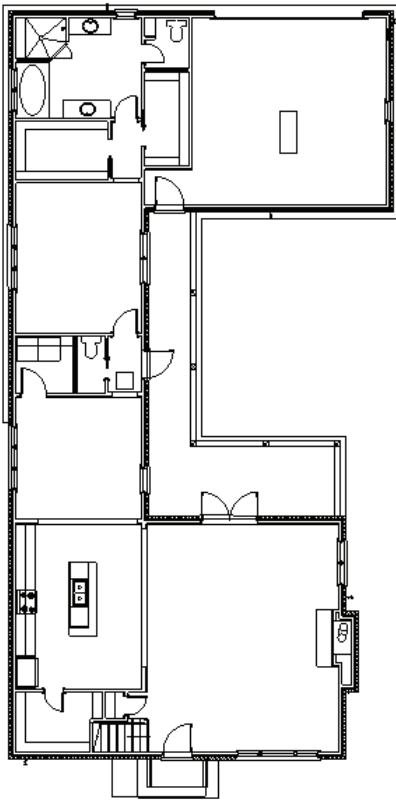
2,768 sq. ft conditioned approx

3,114 sq. ft total approx

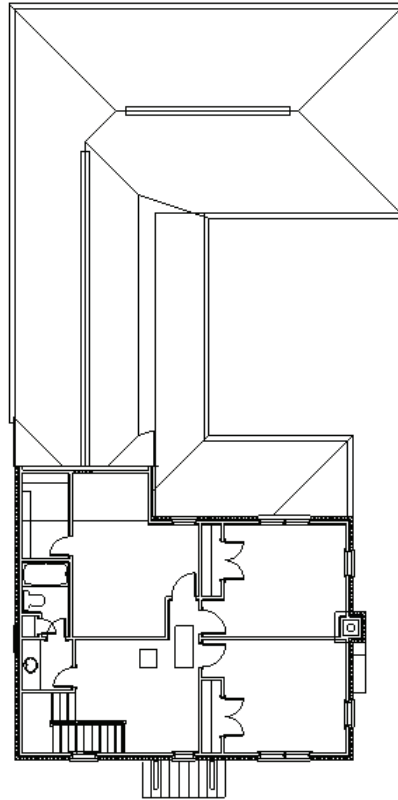
This spacious plan offers a flowing layout from family living room through to courtyard. Featuring a gourmet kitchen and separate dining room or study, the Bromley offers a ground floor master suite, two car garage, and ample second floor living space for children or guests.

Features Include:

- Post-Tension Foundation
- Brick Exterior
- No Rot Materials
- Pella Metal Clad LoE Windows
- Premium Insulation Package
- Custom Cabinets
- Granite Counters
- Energy Star Appliances
- Premium Light Fixtures
- Hardwood Floors
- Ground Floor Master
- Attached Garage
- Chimney
- Spacious Private Courtyard
- & Much more!



1st Floor



2nd Floor



For more information, visit the Hampstead Information Center. Open Daily, 334.270.6730 | hampsteadliving.com | [@hampsteadliving](https://www.instagram.com/hampsteadliving)

