

Hampstead Living



THE GRAMERCY

\$529,900

4 Bedroom, 3.5 Bath

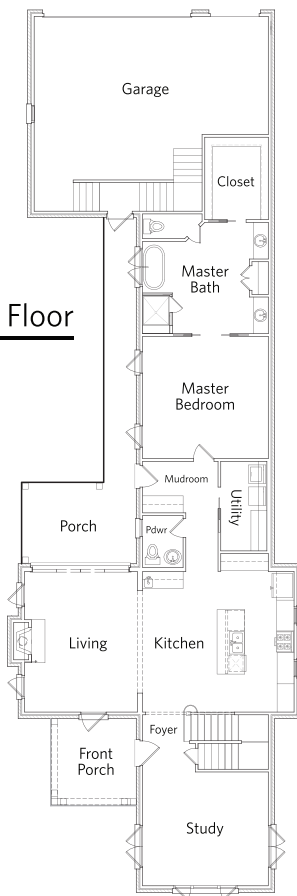
3,064 sq. ft living space approx

The spacious Gramercy plan is ideal for entertaining with its spacious and open main living areas and a central kitchen with a large island overlooking the living room. The ground floor master suite is the perfect relaxing retreat. Upstairs features 3 large bedrooms, 2 full baths and an incredible bonus room or flex space. Situated on a corner lot fronting the beautiful park along Clerkenwell St.

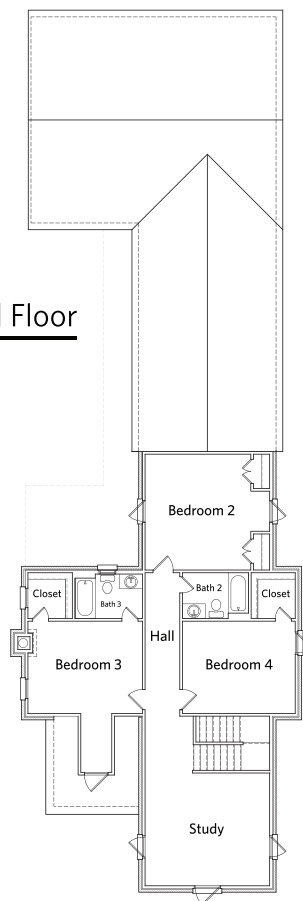
Features Include:

- Premium Insulation Package
- Granite Counters
- Custom Cabinets
- Pella Lo-E Windows
- Brick Exterior
- Attached 2.5-Car Garage
- Ground Floor Master
- Spacious Private Courtyard
- Post Tension Foundation
- Premium Light Fixtures
- Much more!

1st Floor



2nd Floor



For more information, visit the Hampstead Information Center. Open Daily, 334.270.6730 | hampsteadliving.com | [@hampsteadliving](https://www.instagram.com/hampsteadliving)

